



# The ILS22G Lectern

## User set up guide

Status July 2009



ILS22G interactive lectern is a special product designed to use for presentations, in particular Powerpoint presentations using the Sho-Q presentation delivery program.



**Congratulations with your ILS22G product. If you received this product fully integrated and ready to go, launch sho-Q to start presenting.**

## **Sho-Q**

To start using sho-Q, you must connect a projector or external display to the ILS22G (VGA connector with converter or DVI-D connector on the DVI-I socket provided)

You can then start sho-Q presenter and insert presentations, either through setting them ready with sho-Q Planner, by using sho-Q presenter's browser (press Manage Presentations, add) or by inserting a USB memory stick with a Powerpoint presentation that has been exported with sho-Q Pre-processor. Pls. refer to the sho-Q user manual.

With all presentations lined up on the sho-Q Presenter selector screen, one touch will start the presentation, simply pressing next or previous slide, or select from view all slides... staged slides and embedded videos are controlled with translucent buttons appearing within the current slide view frame, when needed. Better control of videos is offered when sho-Q's plug in for inserting video's and flash files has been used (any sho-Q program automatically inserts Windows Media Player in Powerpoint)

Sho-Q requires that MS PowerPoint or MS Office 2007 or 2003 has been installed.

Sho-Q is optionally expanded with a system to capture the presentation along with the video image of the presenter in a virtual studio setting, in order to project the combined image in large auditoria. This is a unique productivity solution as the XGA signal can stream real time over normal IP lines and be recorded at the same time.

## **Preparing the ILS22G**

Using the right brackets, the ILS22G plateau may have been installed on the Powerlift electrical lift and foot, on the ILS24 19" lectern cabinet, placed on any table or a custom designed podium.

On the front panel on the right of the DVD unit there is the power on button. After switching on the power, the ILS-logo in blue must appear on the top left. Do not touch the system until it has finished completely its set up, marked by the fact that the Room Control and Keyboard buttons are lit. Tap on the monitor field to see if the cursor is picking up your touch. (When not, see end of next chapter)

**Display:** the ILS22G includes a 22" wide screen format display with 1680x1050 display resolution. For better reading in the display panel has been placed "upside down" in the plateau, you may see it start up with a start up screen that is upside down. The display panel is connected through the LVDS internal connector to the processor for the best performance and control possible.

In case the display remains displaying upside down, then the INTEL GMA controller has been reset. Open the display icon in the bottom right task bar tray and set the display at 180°

The operating system display settings must show the second display at its best resolution and set as extended desktop device. (Right-click anywhere on the display and choose properties from the drop



down menu. Select the settings tab. Select 2<sup>nd</sup> monitor, set its resolution with the slide bar and tick the extended desktop mark)

## **SOTouch**

The ILS22G is equipped with a very advanced new patented acoustic touch detection system. Because of this new technology, the design is remarkable: although the entire glass surface responds to touch technology, there is no need for a bezel. The ILS22G uses regular tempered glass of narrow specifications. The edges remain clear all around, any spilled water or coffee, any dirty finger marks can be cleaned with a regular wipe and glass cleaner. Avoid pouring water over the top of the glass where it can seep between glass and aluminum top with XLR sockets. The system is not entirely water-proof! The top of the glass has been treated with the finest grain, to avoid that the presenter looking at his mirror image...

The ILS22G touch implementation uses 2 sensors and detects locations from interference signals generated when the glass is touched. The calibration process is simple and with this technology – after you are satisfied with the reach of the touch – you never need to calibrate again (unless you break off a piece of the glass). The touch works with your finger or any object, provided some degree of impact is performed that generates vibrations within the glass. You can place an object, a book, a cup of coffee (really ... don't!) on the surface and the touch calibration remains unaffected.

When you change the resolution of the native screen the calibration is usually not affected, but if the screen ratio is changed, you may need to re-start the program.

The touch system in static mode is ideally suited for operating the sho-Q Presentation delivery system. Drag and drop features can be used now as well. We recommend that you use this mode in general operation, but for instant touch needs such as in presentation delivery with Powerpoint or sho-Q disable the drag and drop feature. This is done with a tick mark in the control panel of SO touch and eliminates the slight delay where the system is trying to understand if a touch is the beginning of a trail or just a touch.

Normally you receive the system with SOTouch pre-loaded



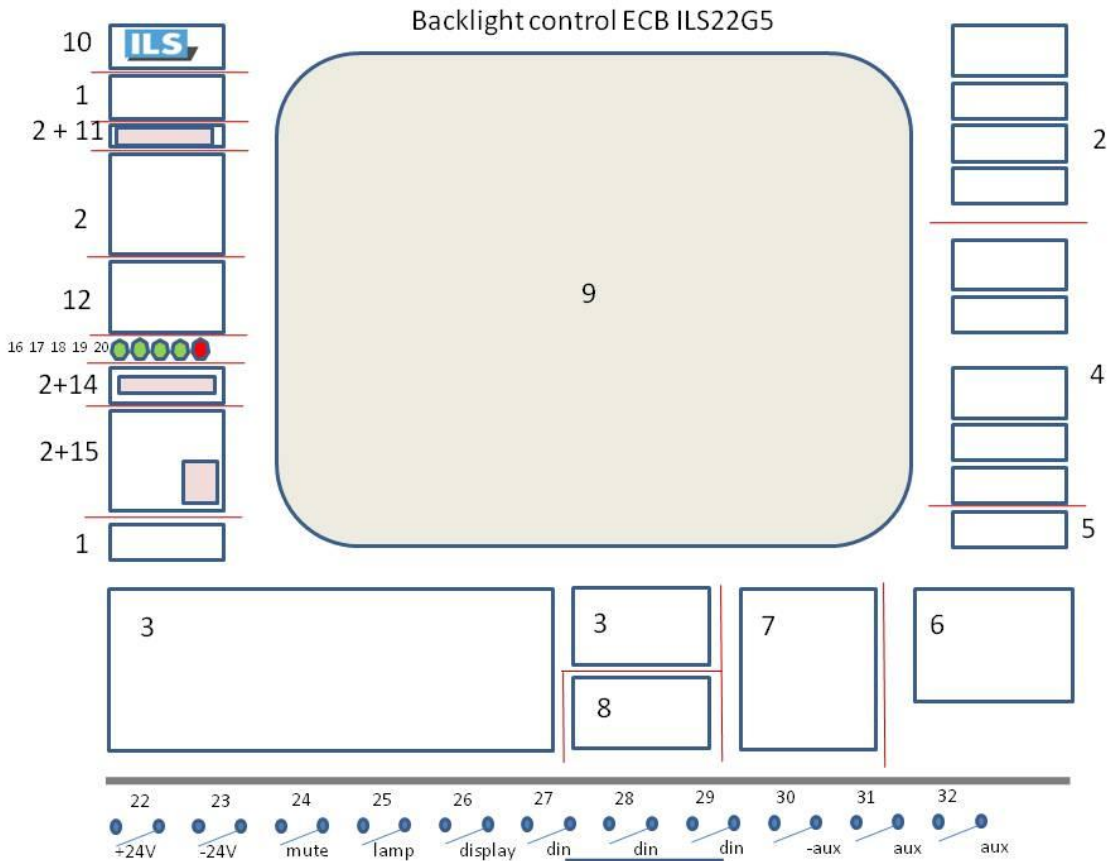
a.

## Virtual keyboard

The bottom of the glass is printed with a mask and buttons. You will recognize on the left side room control commands, on the right side source selection and some short-cuts. On the bottom area are keyboard, directional keys, mouse pad and annotation pad.



Only when the LED's behind the keys are lit, you can see the actual key pads. There are nine fields that can be individually programmed to be made visible. Furthermore there are 5 level indicators that can be programmed as well as signal areas for Projector, Touch, Mute and PC audio. (see diagram 1)



In a normal setting almost all keys are invisible except for CONTROL and KEYBOARD (and ANNOTATION when this feature is included in future versions) by tapping on these keys the rest will show up. Tap again and they will extinguish and be insensitive to touch. Only lit buttons are sensible to touch. For operation and programming convenience the backlights are grouped by functional areas. (e.g. 2 for room control, 3 for keyboard, 4 for short cuts, 5/6 for annotation (for support in future system releases), 7 for the touch pad, 8 for directional keys.





RPT2, the stereo jack is issuing a +\or – 5 volt to switch the 2-way VGA switcher inside the ILS24G version with the cabinet that includes a 4-way and a 2-way Extron switcher (but may also be used for other purposes)



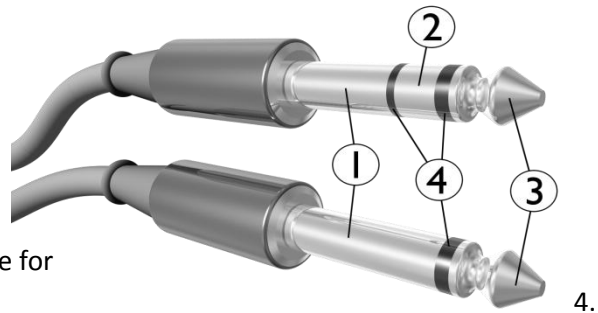
RPT 1 - RPT 2 - RPT 3

The RPT3 RJ45 has 4 circuits on its 8 connectors that are opened or closed by the relays for any need. Do not apply more than 12 volts per pin pair!

The remaining 2 relays are for internal use (microphone mute switch and optional light switch)

**Socket layouts:**

- 1. **Sleeve:** usually ground
- 2. **Ring:** Right-hand channel for stereo signals, negative phase for balanced mono signals, power supply for power-requiring mono signal sources
- 3. **Tip:** Left-hand channel for stereo signals, positive phase for balanced mono signals, signal line for unbalanced mono signals



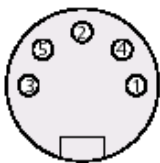
**Insulating rings**

**3,5 mm jack plug stereo**

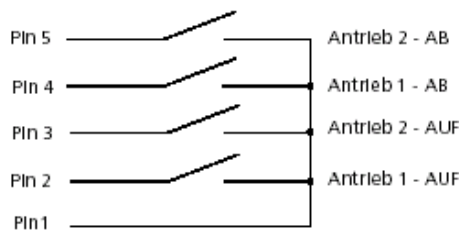
- 1= white wire = ground
- 2= brown wire = ring
- 3= green wire = tip

relay no:	field protocol:
3,4	24 & 25

**DIN plug 5 pins:**



5-poliger Stecker nach DIN 41524 (Ansicht auf die Stifte)



- 1= gray wire
- 2= yellow wire
- 4= pink wire

1,2	22 & 23
-----	---------

**RJ 45 connector:**

- 1= orange/white wire
- 2= orange wire
- 3= green/white wire
- 4= blue wire
- 5= blue/white wire

6,7,8,9	27,28,29,30
---------	-------------



6= green wire  
 7= brown/white wire  
 8= brown wire

**XLR5:**

1= ground(shield)  
 2= switch ----- blue wire 5      26  
 3= negative signal-----blue wire  
 4= switch -----white wire 5      26  
 5= positive signal-----white wire

**XLR3:**

1= ground(shield)  
 2= positive signal-----white wire  
 3= negative signal-----blue wire

Note: Reserve on connector P4 are relay numbers 10 &11 with respectively field protocols 31 and 32.. Pin numbers P4 are 17,18 (relay number 10); 19, 20 (relay number 11).  
 All commands are issued through the COM4 port.

COM1, COM2 and COM3 are available to hook up RS232 controllable devices, such as projectors or the 4-way switcher inside the ILS24G 19" cabinet based version.



Next to the LAN network connector, the second LAN port can be used to connect to IP protocol driven control systems.

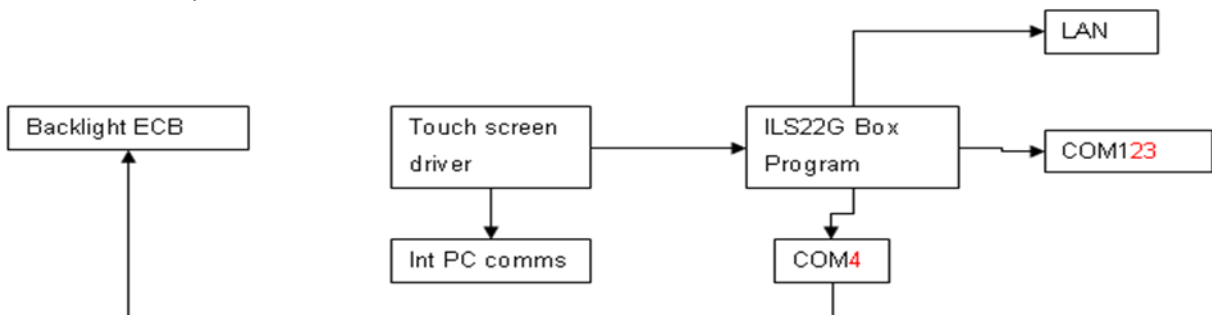


Diagram 3



The flexibility in addressing and programming is endless.... However in our implementation we regarded mainly what functions are needed when standing behind the lectern. E.G. Projector on may trigger the projector to start, but you could also combine that with issuing commands to close the curtains, lower the screen and dim the lights..., similarly the lights button is for having the lights up or dimmed, no matter how many bays of light switches are behind that. We do not claim to control very possible light setting. If that is required, use the “Extra Buttons”-button to open a room control application on the PC screen and use its touch to do any refined setting.

This also applies if you require a local language keyboard; just program that link to an OSK under the “Extra Buttons”-button.

Depending customer requests ILS may program more keys and function keys under the extra buttons.



## Microphones

The ILS22G provides 2 sockets for microphones.



On the left you find an XLR5 connector on which our optional microphone is placed. This option consists of a high quality Shure condenser microphone with pre-amplifier. Due to its modification it can be muted from the glass surface MUTE touch button on the left and is thus brought under computer control (also possible from a remote PC...) the connector to the amplifier is the corresponding miniXLR4m in the I/O bay.



The MUTE switch is executed by relay 5, field command 26.



Mini XLR connections in the I/O bay....

On the right side is the XLR3 connector on which you place any microphone/phantom powered microphone with external pre-amp and amplifier. The mute button can still be used to address such microphone system provided there is a way to connect over RS232, over IP, or through a relay.

## PC

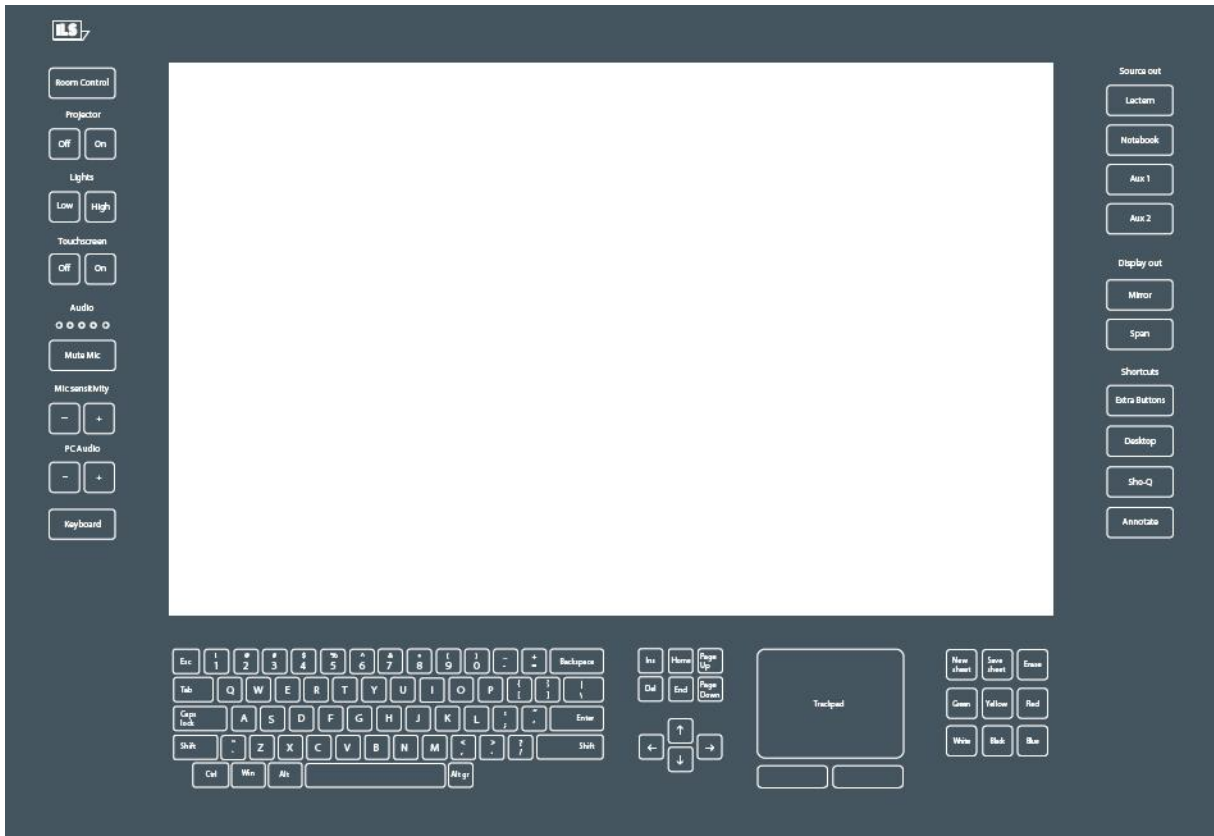


The internal PC power is based on an industrial motherboard with INTEL945 series board with Core2Duo processor. This is a special board to provide the 4 COM ports and dual LAN with LVDS to the monitor and DVI-I for flexible connection of display devices. On the front of the ILS22G you find 4 additional USB ports (and 4 in the I/O bay), a multi format DVD player and the ON/OFF switch (hold 4 seconds before switching off to prevent accidental switching)

The system is provided with the Microsoft XP Professional 32-bit Operating System. Optionally it comes with MS Office2007, however this is usually expected to be supplied and loaded by the client. Sho-Q comes pre-loaded with the license key provided. If sho-Q Presenter is loaded by the client, after downloading from [www.sho-Q.com](http://www.sho-Q.com) it will function while showing "Sho-Q Evaluation Copy" on the output. There are special instructions provided on obtaining the license key to remove the mark in the output. For further details, see the sho-Q user reference manual. When the user installs his own MS Office program, please re-install sho-Q Presenter in order to insert plug-ins into the M PowerPoint program.



## Glass-plate buttons and standard functions implementation.



Where as the inner-side of the glass-plate functions as touchscreen for the LCD and the operating system, the outer sides (left, bottom and top) contain engraved headers and buttons for additional functions and the integrated keyboard. These functions are available to the presenter if they are visible with the backlight turned on.

When the system initially starts-up, the Room Control, *Mute Mic* and Keyboard buttons are lighted and can be used. When starting-up the lectern PC, let the system take its time and do not touch it, until these keys are lit.

To familiarize the user with the possible functions, ILS has provided *a default* driver set. It is the intent to adapt the program to the specific user installation, by adding or changing the pre-defined functions. With this version we do have the modules available to quickly program for your specific installation.

ILS also offers a user definable driver set based on the various needs reflected by its customers, *via ILS22Setup*. First time use of the system allows you to define the way buttons are going to be used by simply inserting communication codes *via a Setup Wizzard*. See the *ILS22Setup Section* for details.



## The Buttons.

### Keyboard

This key is located at the left bottom of the plate. Press this key to activate the keyboard buttons at the bottom of the plate. This is useful when you need to enter a filename or other text in an application. When pressed the keyboard backlight will come on indicating access possibility. Pressing the keyboard key again will disable the keyboard (lights will go out).

*Note 1: Via Extra Buttons/ILStranlator Setup one can define whether the keyboard and/or mouse functionality should remain active if the Touchscreen buttons are turned off.*

*Note 2: The key marked Win, functions like hitting the start button in Windows XP and brings up the start menu. Hitting it again will hide it.*

*Note 3: although a touch keyboard is not meant for regular writing of prose, users that require a local language keyboard may bring up an on-screen keyboard from the accessibility folder of the PC, this can be started from the keyboard button or extra buttons-function if you so desire.*

### Room Control

This key, located at the top left, is used to activate or de-activate other keys on the left (system control) and on the right (input/output control and additional functions). Which function buttons come available is depending on the number of times the key is pressed in a 1 to 5 sequence. See table 4 for an overview. The 5<sup>th</sup> press turns the system back to its original state. We propose this carousel to limit the number of buttons a presenter might have to deal with. Usually no more keys are visible than needed within the presentation. Typically after set-up, the presenter will only be confronted with 3 back-lit buttons: Control, *Mute Mic* and Keyboard.

### Projector

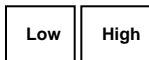
Off

On

This key group is used to directly control an attached projector from the system. The On key will send a command string to turn the projector on, the Off key will shut the projector down. The Projector header can be pressed to send an inquiry command string, e.g. for requesting current lamp hours or power query. The command strings can be send over a serial (RS232) connection. Alternatively, strings can be send to a serial attached intelligent controller, such as from EZcontrol, Extron, AMX or Crestron. In the standard version, these keys are NOT defined, as they are dependent on manufacturer and model. *However, this can be set via the also supplied ILS22Setup program.*

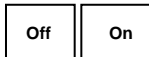


#### Lights



This group of keys is aimed to control the room lighting conditions. If an intelligent room controller is attached (RS232) the keys can be programmed to send a command string to the controller. The Lights header can be used for another function, e.g. screen down for the projector. In the standard version, these keys are NOT defined. *However, this can be set via ILS22Setup.*

#### Touchscreen



After a 1<sup>st</sup> press on Room Control, these functions become available. In cases, it might be required to turn the glass-plate buttons off, e.g. when a presenter wants to present from paper on top of the glass and to not accidentally execute functions. When the touchscreen is disabled (hit the Off key), all other keys are disabled and the light behind the keys will blink in a 2 second sequence. The ONLY key accepted in this mode is the On key. The Touchscreen header can be pressed (functions as a toggle) to turn the light behind on or off.

#### Audio

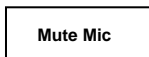


The audio group consists of a header and 5 led's (4 green, 1 red), which can emit light in two stages, e.g. light green and darker, light red and darker, indicating the master audio level of the build-in mixer. The master volume is indicated in a range from 0 to max, e.g. all off or all on (including the red LED) on a 0-100% basis. A setting of 50% results in first 2 green led's full on, 3<sup>rd</sup> LED light green. The Audio header functions as a toggle to show or hide the volume setting.

Note: The audio volume can be adapted under the PC Audio group, see further in this document.

Note: When the Touchscreen is OFF, the LED's *in earlier versions*, get another meaning. The red LED indicates that the internal (Shure) microphone is muted, the green LED next to it indicates the mic is not muted. See next paragraph.

Note: A blinking red LED indicates the PC Audio master volume is muted. See the PC Audio group description below.



The Mute Mic key is to mute/un-mute the so called Internal microphone connected to the top left socket (as opposed to a loop-through microphone connected in the top right socket). When pressed the backlight will blink to indicate the microphone is muted. Press again to un-mute. The microphone control functions are re-programmed to address an external amplifier controller when the XLR sockets are connecting microphones straight to an external amplifier without a local pre-amp in the microphone foot for local on/off control. *How the Mute Mic button is functioning is set via ILS22Setup.*



#### Mic sensitivity



Intended to increase or decrease the internal microphone level or bias setting. In the standard version, these keys are NOT defined. The Mic sensitivity header functions as a toggle, showing or hiding the master volume setting (see also next paragraph). *Via ILS22Setup one can define how and with which communication setting Microphone volume is controlled by an external controller.*

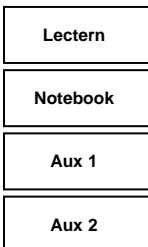
#### PC Audio



Increases/decreases the master volume of the build-in mixer. With these keys the presenter can locally adjust the volume output of the system. On a 0-100% basis, the audio level is indicated by the 5 LED's (4 green, 1 red) under the Audio group. See earlier in this document. The PC Audio header functions as a master volume mute/un-mute toggle. When pressed the master volume is muted. The muted state is indicated by a blinking red LED under the Audio group. Press again to un-mute.

Note: Although the master volume may be muted, the LED's still indicate the audio output volume level.

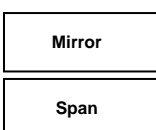
#### Source out



This group of keys is intended to select the output source, whether the Lectern System, an external connected notebook PC or Auxiliary devices such as DVD player or other devices. Lectern is used by default. If an intelligent external switch controller is connected (via RS232), command strings can be send to the controller. In the standard version, these keys are NOT defined, as they are dependent on manufacturer and model.

Note: *Functional behaviour of the keys is defined via ILS22Setup.*

#### Display out



This group of keys sets up the external display or projector. Mirror will show the same image as on the system display, Span will extend the system desktop to the connected projector or external display. In the current version, these keys are NOT defined.



The Display out header key will bring up the embedded graphics controller interface, so that extended desktop or mirror can be set up manually. (Procedure details: to switch settings you must first assign the same resolution of the external graphics display port to the internal monitor. After applying that, you can make the switch AND set or reset the screen orientation; the internal monitor is set to 180° rotation)

#### Shortcuts

Extra Buttons

Desktop

Sho-Q

The shortcuts group provides a quick manner to activate additional functions. The Extra Buttons key will bring up a window on the LCD screen with additional touch buttons. The Desktop key will show the desktop by minimizing all windows into the taskbar.

Note: When Sho-Q Presenter software is running, this key will bring up the taskbar.

The Sho-Q key will start up Sho-Q Presenter software. Although normally Sho-Q is started with system startup (via a shortcut in the start menu), this key can be used if Sho-Q was stopped and needs to be started up again.

The Shortcuts header key emulates an Alt + Tab keyboard entry to quickly jump from one program window to the next one.

Annotate

The Annotate key activates the annotation keys in the bottom right part of the glass-plate. In the standard version, these keys are NOT defined. An implementation is planned once a software update is made available for the touch technology to include drag & drop capability.



Functions becoming available and being activated after a number of Room Control key presses, when using the default set up:

Number of Room Control presses	Activated group of keys	Remarks
0- Zero state	Room Control key, Mute Mic, Keyboard key	System startup condition
1- Limited action	Touchscreen group, Audio group	Ability to turn touch screen off
2- Set-up mode	Projector group, Lights group, Mic sensitivity, PC Audio, Source out	
3- Expert mode	Shotcuts	
4- Future mode	Annotate	
5- Zero state	Room Control key, Keyboard key	System startup condition

Table 4



## ILS22Setup

The program to configure your ILS22 with ease.

### Introduction.

As the name of the program suggests, ILS22Setup gives the end-user the opportunity to program the behaviour of the ILS22 with respect to the control functions, which are located to the left, bottom and right of the system LCD screen, engraved on the glass plate.

See the ILS22 user guide above for a more in-depth explanation on using these buttons and headers.

Simply put, the ILS22 glass-plate buttons and headers can be used by the presenter, end-user or supporting technicians to execute commands directly (e.g. startup the Sho-Q Presenter package), enable or disable keyboard entries, increase or decrease system audio volume output etc. And by hitting the Touch Screen Off button one can temporarily disable all these keys (until the On button is hit again). This is handy when presenters use the surface for other purposes than presenting using the embedded functions.

As far as control features, the ILS22 and embedded functions in general can control:

- An attached projector. Power On, Power Off, or definable commands for example inquiring power status or lamp hours.
- Room light condition. Turn light higher or lower.
- Audio volume. Higher or lower or mute.
- Microphone volume, mute/un-mute.
- Display out selection, either Lectern itself or attached devices such as Notebook or auxiliary.
- Electrical pedestal elevation up/down.

All of these functions depend on the embedded system software driver which we call ILStranlator, and the setup defined with ILS22Setup.

Basically, and as defined with ILS22Setup, there are 3 possibilities per control function:

- The ILS22 will do it. Internal software in ILStranlator, internal relays and direct communication (RS232) to external devices are under direct control of the ILS22.
- The ILS22 has nothing to do with it. Glass-plate touches have no effect, external devices and circuitry is used.
- The ILS22 is setup as an intermediate or user-interface. Glass-plate touches will be translated into commands to external intelligent controllers which will perform the requested action.

ILS22Setup makes the system a hybrid one. You can choose and match according to local conditions and requirements:

- Select which device is taking the action.
- Define communication parameters.
- Which keys are programmed for action.
- Enter the ASCII command strings you want for external control.
- Which relays in the system are used.



The ILS22Setup Wizard will guide you through the possibilities. Each form will show what the default factory setting is.

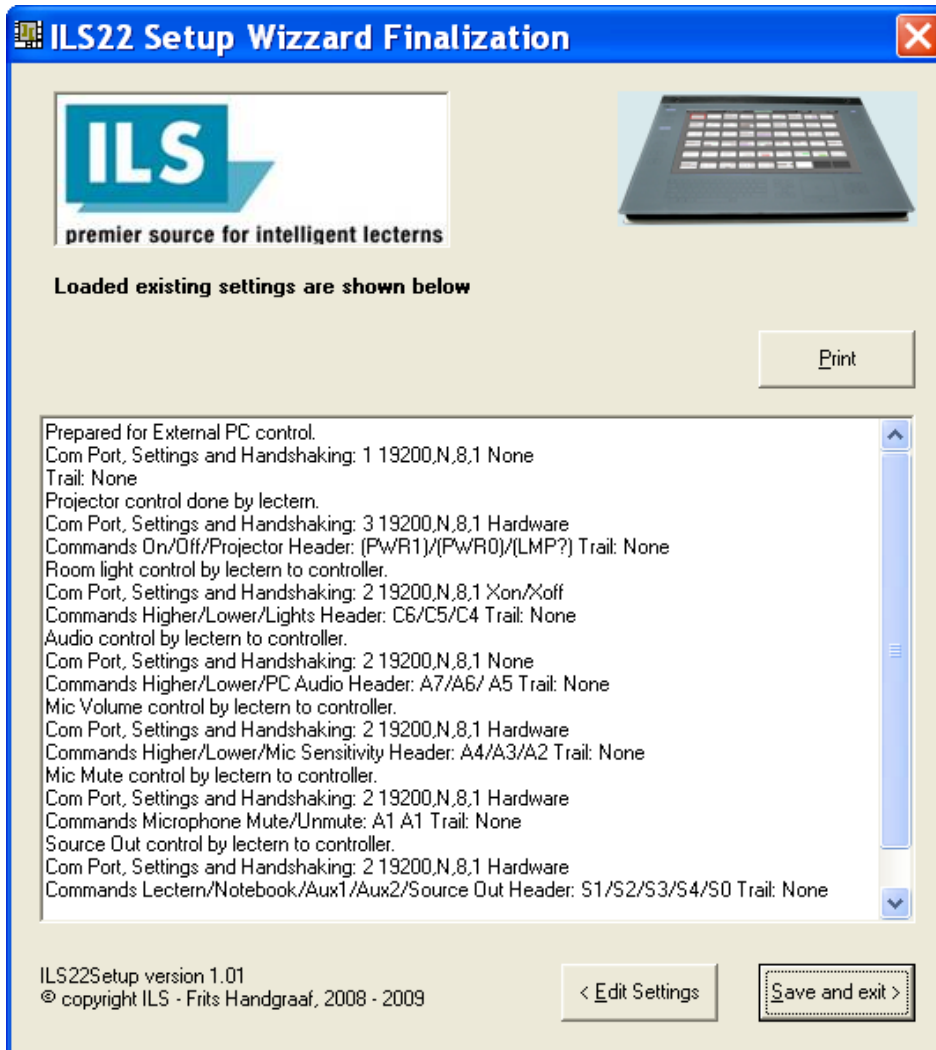
The following part of this guide will just show some examples. The Wizard functions basically the same for all available and definable buttons.

### The ILS22Setup Wizard.

The ILS22Setup program when first started, will show up as a XP-alike Microsoft Wizzard.



When ILS22Setup was executed before and parameters were saved to the system registry, the following form comes up:



In order to change the Setup, press Edit Settings (Alt-E).

The wizard is self-explanatory, but we will continue with some examples.

Note: Moving the mouse pointer over a button, option, check box or text entry field will bring up related tool-tip-text.



## External PC control.

Whereas the functions can be controlled directly from the lectern engraved buttons, it can also be controlled from an external PC or control device. This functionality is provided if external ICT or A/V support is required or desired. The external controller is connected through a serial connection. The below first form shows up after Wizzard starts editing.

**External System Control**

The system can be controlled remotely from an external control program such as ILS22Remote. If this is desired, Comm1 will be reserved for remote control.

External control

External control is not required or not desired

Keep the possibility to control remotely (Default)

< Back      Next >

**External Control comm settings**

An external control program such as ILS22Remote is able to control this system via a serial communication link. Comm port COM1 will be reserved for this purpose.

Trail chars  
None

See communication parameters below, select baudrate:

Comm port: COM1      Baudrate: 19200

Parity: None      Databits: 8      Stopbits: 1      Handshaking: None

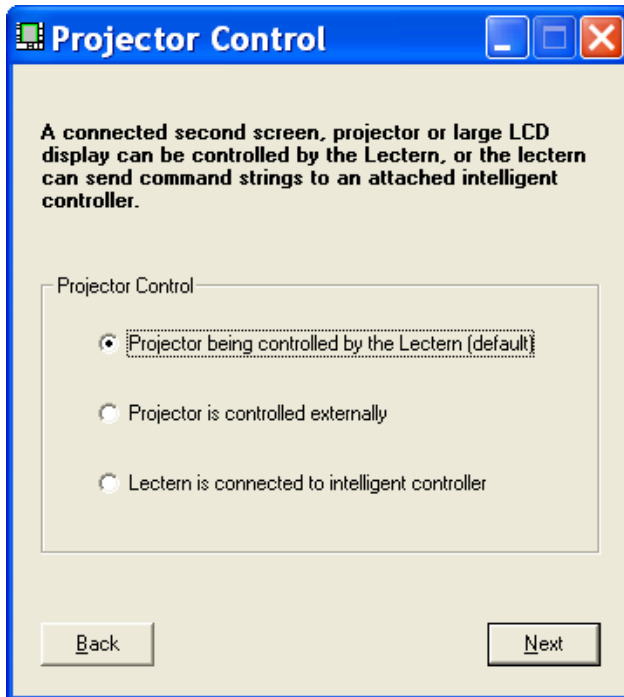
< Back      Print      Next >

By default, ILStranlator assumes remote control is enabled on COM1 with a baudrate setting of 19200 baud. Via the above form(s) this can be changed.

A table with an overview of available remote commands is provided at the end of this user guide.

## Projector control.

The projector control form allows selecting which device is controlling the projector concerning power on, power off or inquiry.



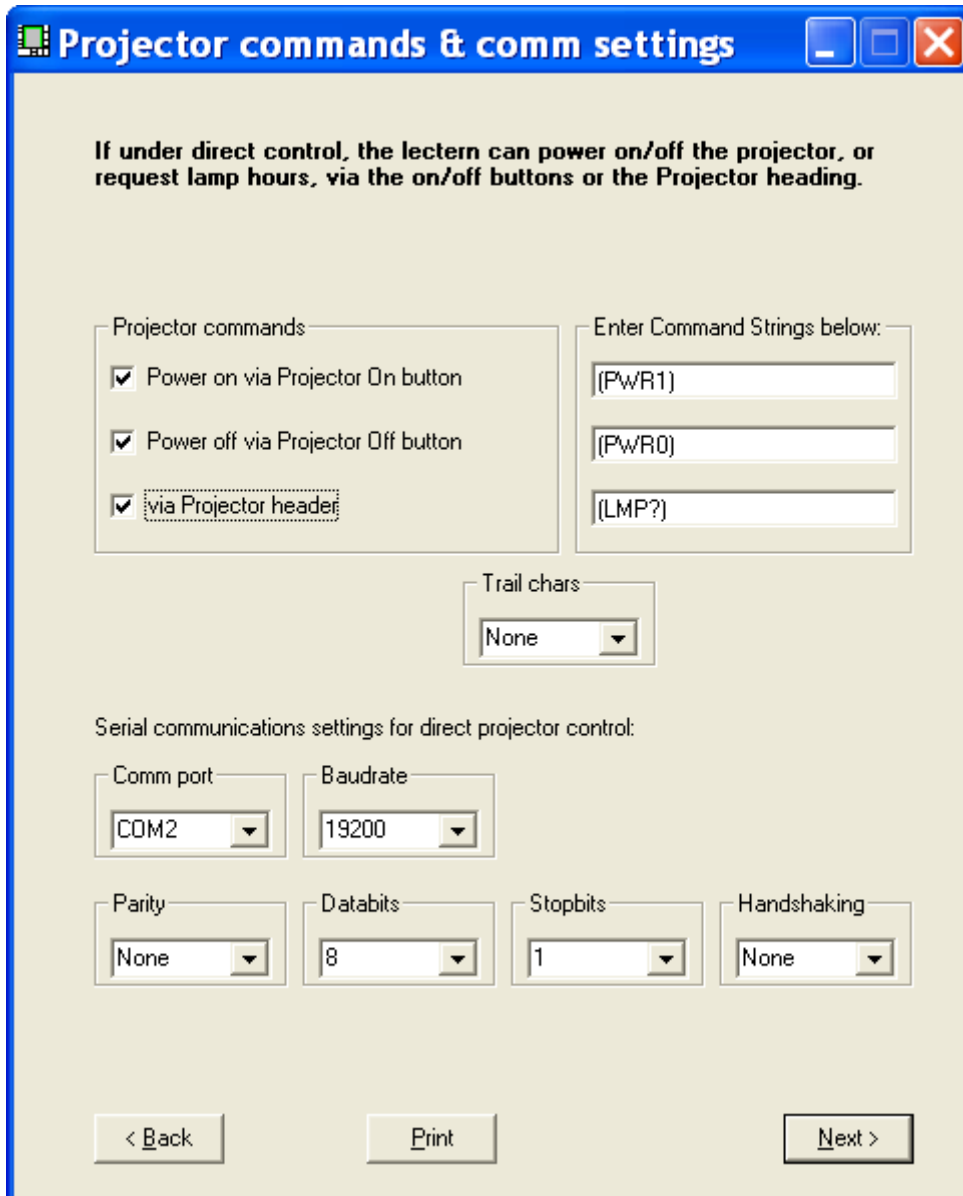
Option possibilities are displayed.

Select the first option if the projector is under direct control of the lectern.

Select the second option if the lectern has nothing to do with it, e.g. the projector functions are under direct control of a supplier supplied IR remote or a controller board room interface.

Select the third option if the lectern has to send out a command string to a connected intelligent controller.

Selecting option 1 or option 3 allows you to enter the communication parameters as shown in the following picture.



**Projector commands & comm settings**

If under direct control, the lectern can power on/off the projector, or request lamp hours, via the on/off buttons or the Projector heading.

Projector commands

- Power on via Projector On button
- Power off via Projector Off button
- via Projector heading

Enter Command Strings below:

(PWR1)

(PWR0)

(LMP?)

Trail chars

None

Serial communications settings for direct projector control:

Comm port: COM2

Baudrate: 19200

Parity: None

Databits: 8

Stopbits: 1

Handshaking: None

< Back      Print      Next >

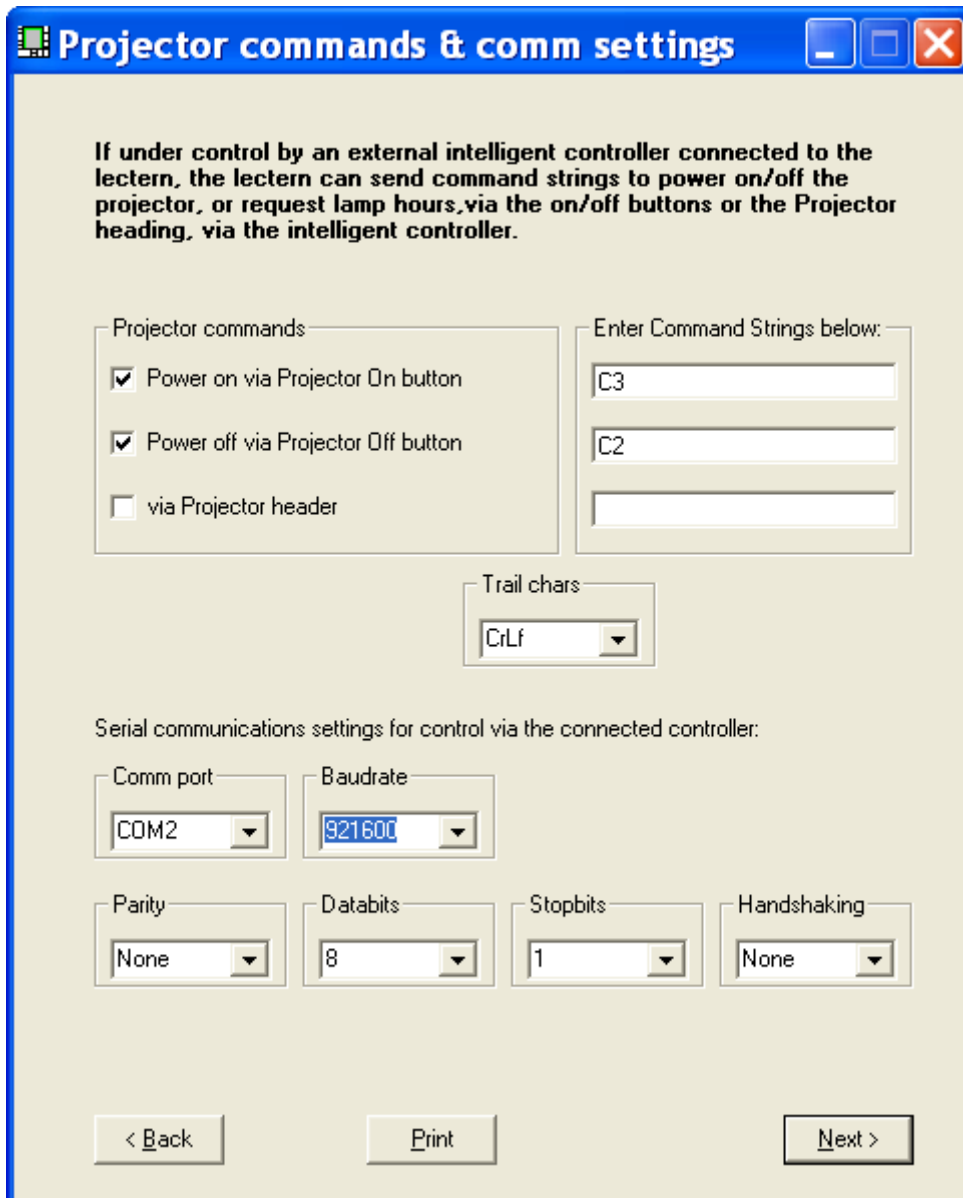
The check boxes allow specifying whether the glass plate buttons are activated (check the box) or not activated (un-check the box).

In the Command string text boxes you can enter the ASCII strings to be send out to the projector to perform the function. In this example, the InFocus CLI command structure is used. (PWR1) ,enter as text without quotes, will power up InFocus projectors, (PWR0) will shut it down. A (LMP?) inquiry via the header will request lamp hours.

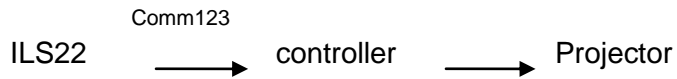
Some protocols require a trailing character to indicate the end of the command. Select under Trail chars (the InFocus projectors require none).

The bottom half allows to specify the communication setting. Select the Comm port to be used on the ILS22, baud rate, parity, number of data bits, number of stop bits and communication handshaking. People familiar with Windows embedded Hyperterminal should recognize the choices.

Instead of being under direct control, the ILS22 can be set up to control projectors via an attached controller capable of receiving command strings over a serial RS232 communication line. See below:



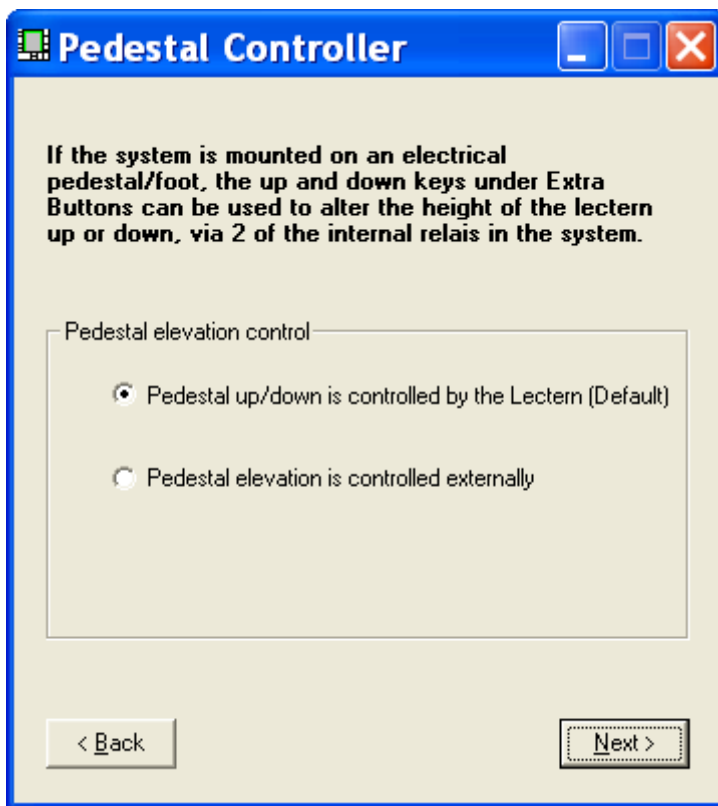
In the String command text boxes you can define which ASCII text string is sent to the attached controller. The controller will receive these commands and translate them into action for the projector connected to the controller. In this example the intelligent controller will, after pressing the Power on button on the ILS22 glass-plate, receive the string 'C3', without the quotes as indication to power on the projector. The controller will translate that into the correct command and perform the task of powering on.

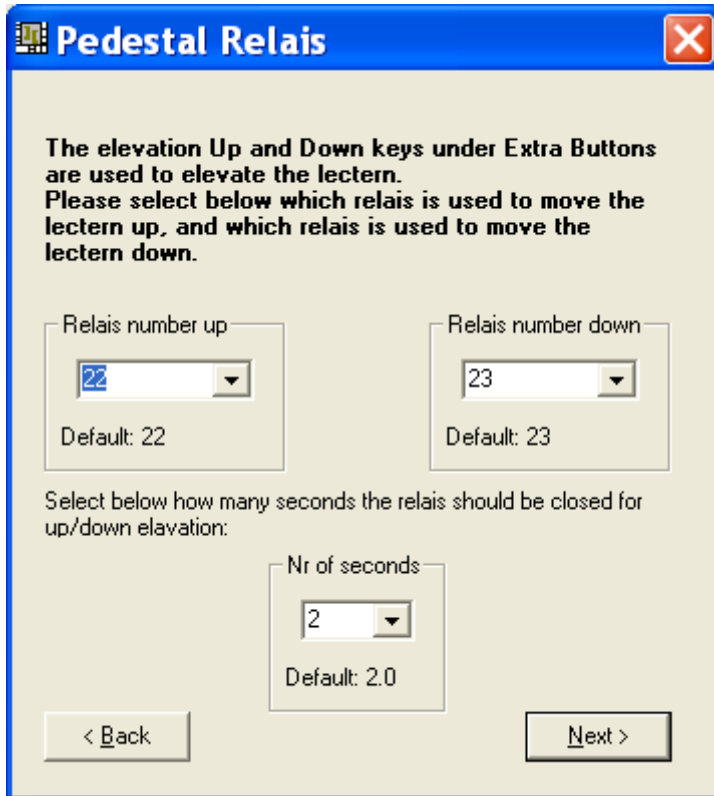


In this example the check box for the Projector header is unchecked, so no action will be taken after pressing the projector header on the ILS22 glass-plate.

### Pedestal control.

If the ILS22 is mounted on an electrical pedestal, it can be elevated up or down .





**Pedestal Relais**

The elevation Up and Down keys under Extra Buttons are used to elevate the lectern. Please select below which relais is used to move the lectern up, and which relais is used to move the lectern down.

Relais number up: 22 (Default: 22)

Relais number down: 23 (Default: 23)

Select below how many seconds the relais should be closed for up/down elavation:

Nr of seconds: 2 (Default: 2.0)

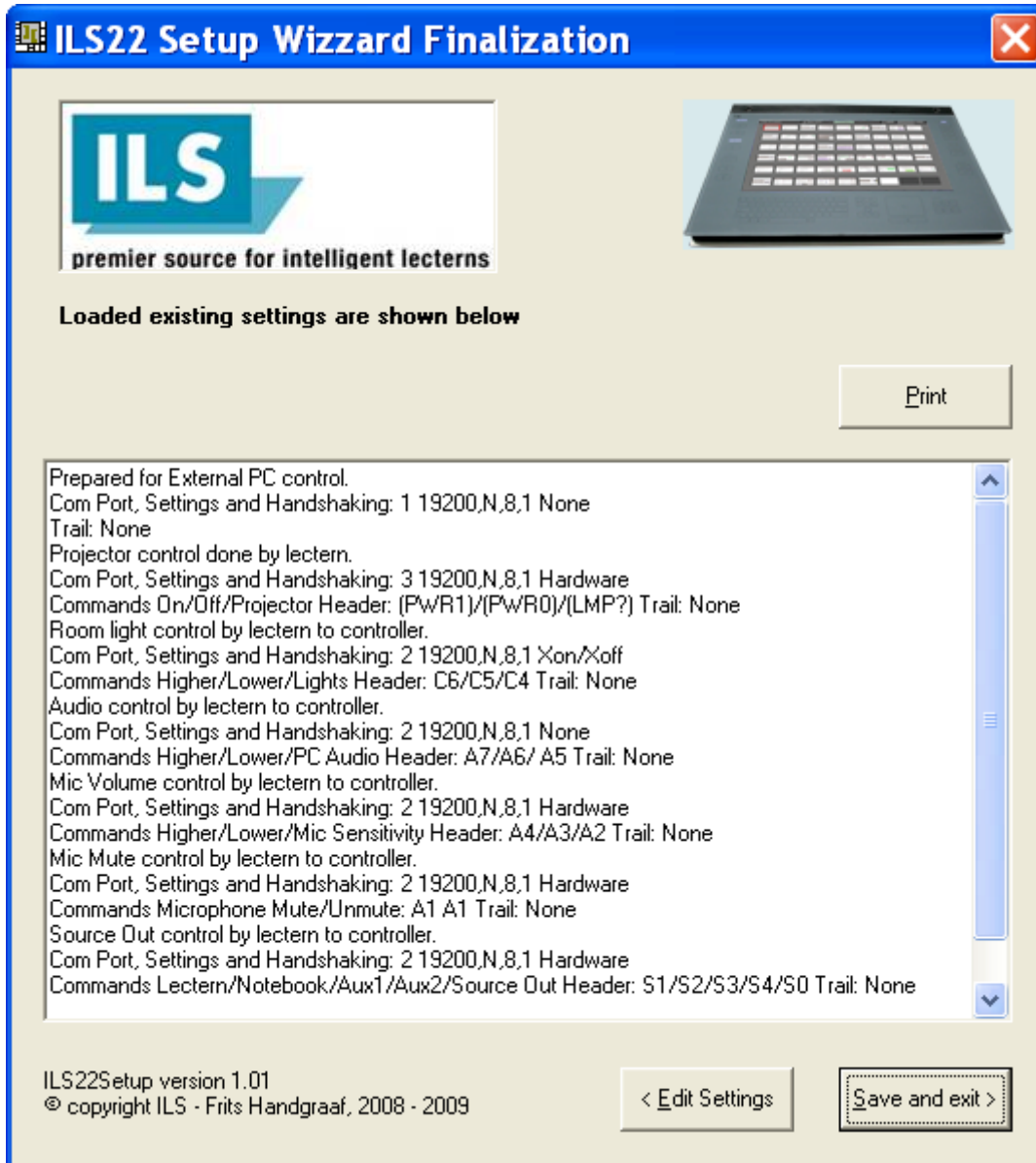
< Back      Next >

The ILS22 has build-in relays for control functions.

By default, relays 22 and 23 are reserved for driving the motor in the optional electrical pedestal from ILS (supplied with the ILS22G).

One can define the number of seconds the relays will be closed (number of seconds for up/down movement). Default is 2.0 seconds.

At the end of the wizard, an overview of selected settings will be provided.



Hit the Save and exit button to save the settings to system registry.

When ILStranlator, the glass-plate interface embedded software, is started up, it will read the settings from the registry and act accordingly.

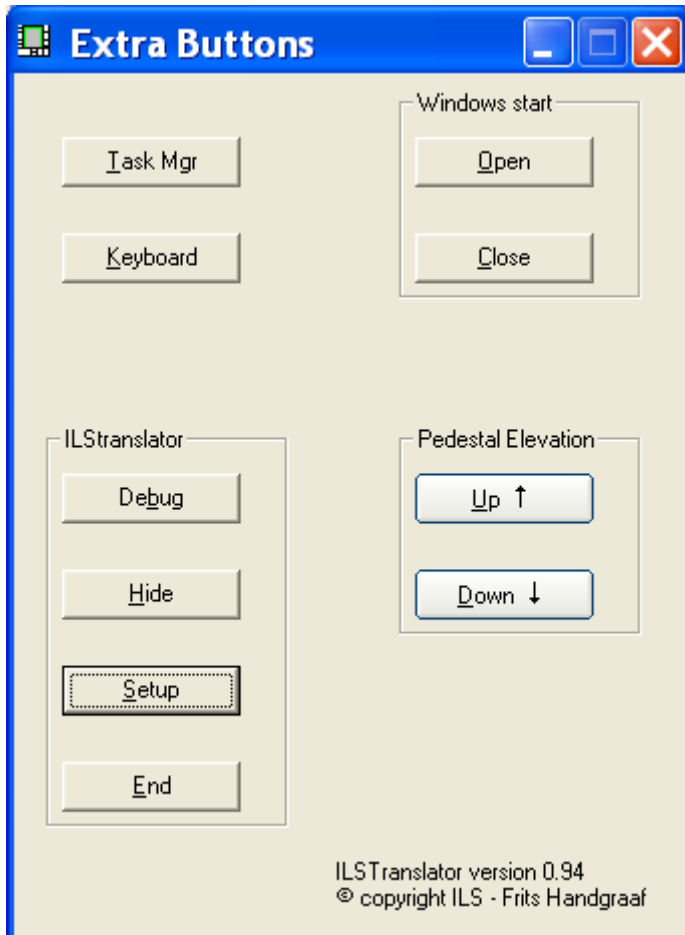
Note: Within ILStranlator, these settings can not be changed. Therefore, restart ILStranlator if changes were made and you want them to be in effect.

Note: Typically ILS22Setup is run once only to adapt the ILS22 to the required conditions.



## ILTranslator Setup.

Via the Extra button (when lighted on the glass-plate) a Windows form will pop up with extra functions and control possibilities.



Task Mgr will bring up the Windows Task Manager (so that applications can be stopped or users can log off).

Keyboard will bring up the embedded software keyboard for local language requirements.

Windows start Open and Close will open/close the Windows start menu.

Pedestal elevation will move ILS22 up or down when mounted on an electrical pedestal.

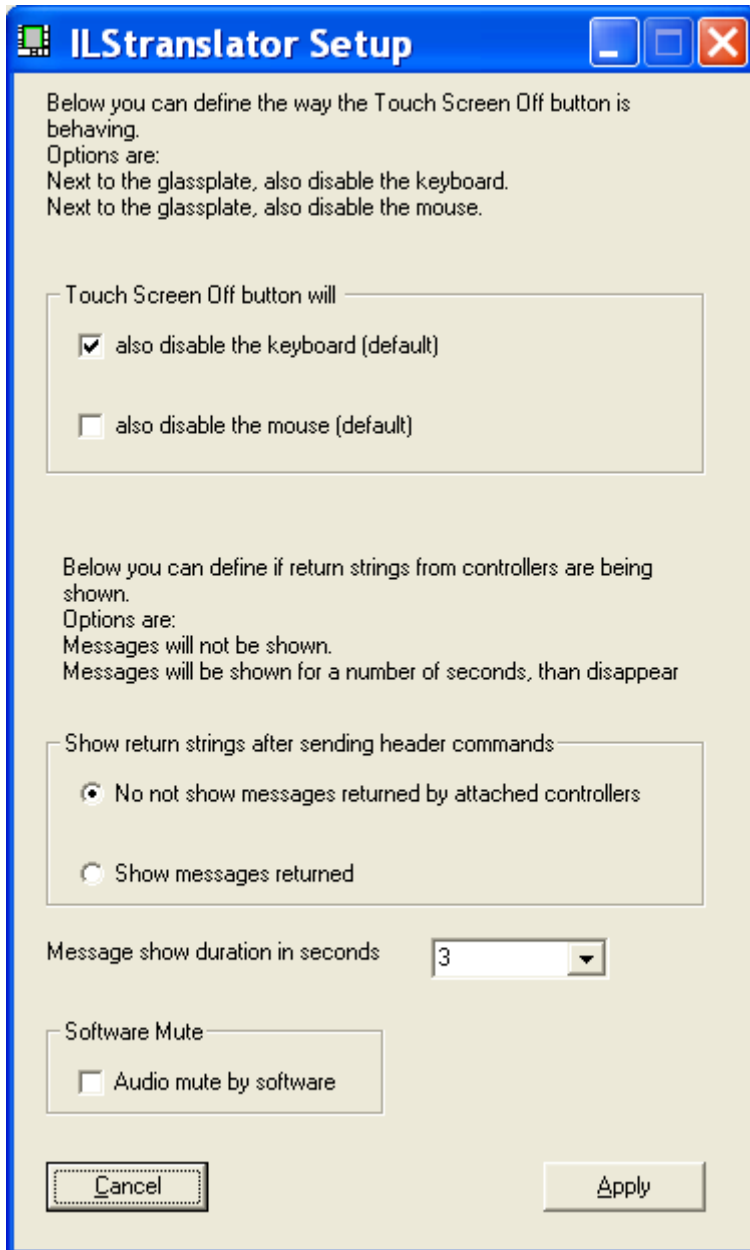
In the ILTranslator section, the Debug button will bring up a small form which allows tracking of instructions received and strings sent to the internal backlight controller or externally connected devices.

Hide will hide the Extra buttons form in the taskbar.



End will end the ILStranlator program and turn all back lighted buttons on the glass-plate off. After ending ILStranlator, the glass-plate buttons can no longer be used.

The Setup button will bring up a new Windows form which allows altering some of the system behaviour functions.



If a user chooses to turn the Touch screen off, none of the glass-plate buttons will be lit nor will any of the buttons function, except for the Touch screen On button. This key will blink to indicate the touch screen is off.

To prevent any keyboard action from an attached (external USB) keyboard or (external USB) mouse interrupting presentations, e.g. if the surface is used for paper presentations, Windows mouse and keyboard functions can be disabled by checking the boxes. Do not disable the mouse if you want to advance slides in Sho-Q presenter.



If an external controller or other device (e.g. projector) is connected to the system, users may want to see (temporarily) the reply of such devices on a command string sent. The duration set will define how long the reply will remain visible.

Check the Audio mute by software box if you do not want to use the mute function of the hardware mixer or if you are experiencing un-mute problems. In presentations using audio, this has the effect of sliding the master volume back to 0 in discrete steps. This is useful for fading down audio in presentations. Un-muting will bring the original volume back on.

Note: Audio mute is performed by the PC Audio header if set so in ILS22Setup.

By hitting the Apply key (Alt-A), the changes will go into effect and the new settings will be saved to system registry.

When ILStranlator is started up, these settings will be read and active.

### **ILStranlator Remote commands overview.**

Please refer to our WEB site for the latest overview published in an Excel spreadsheet.

For other detailed information consult:

Sho-Q user reference manual, for latest status, see [www.sho-q.com](http://www.sho-q.com)

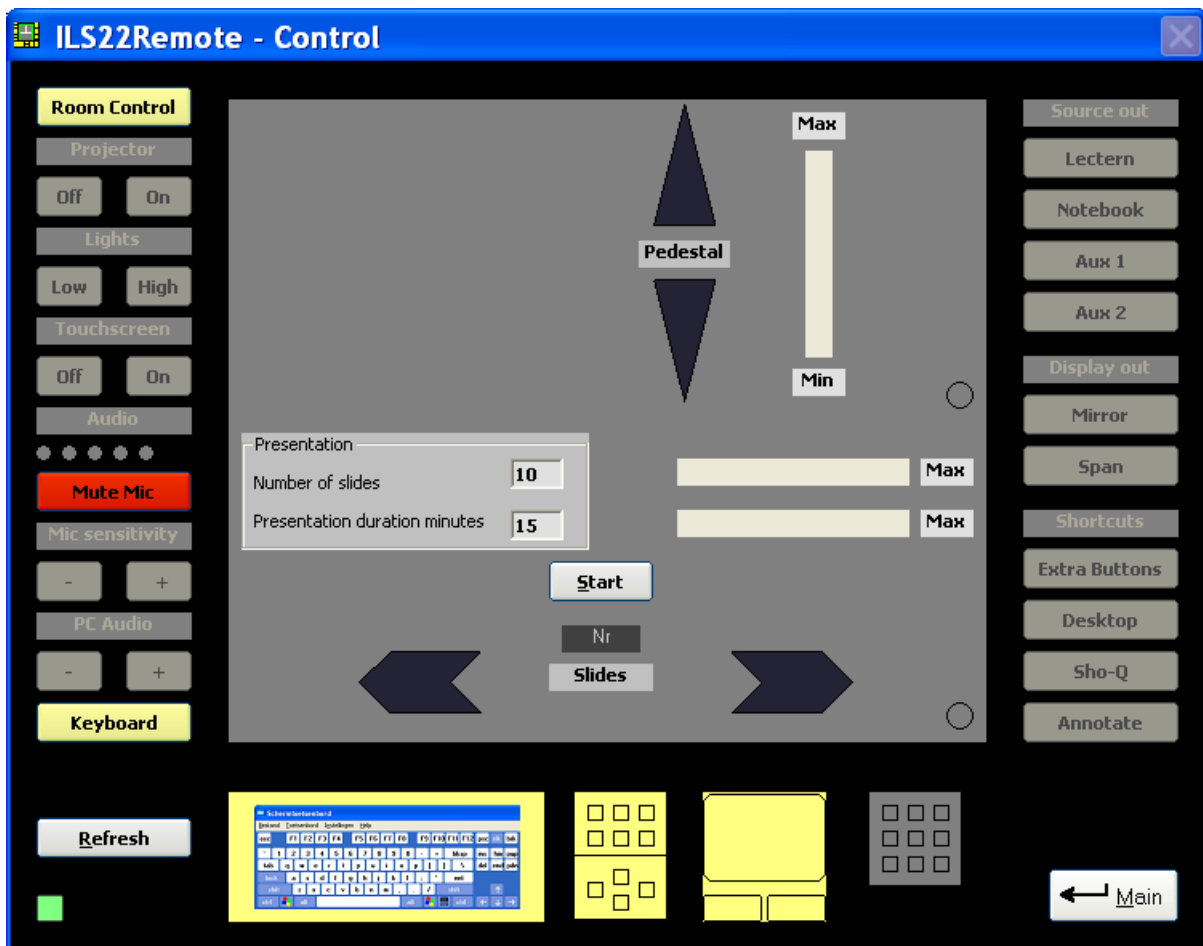
SO touch reference manual, for the technology see [www.sensitive-object.com](http://www.sensitive-object.com)

ILS22 software releases [www.intelligentlecternsystems.com](http://www.intelligentlecternsystems.com)

IL22 remote commands overview [www.intelligentlecterns.com](http://www.intelligentlecterns.com)

ILS22 user guide updates [www.intelligentlecternsystems.com](http://www.intelligentlecternsystems.com)

Below is an artist impression of ILS22 Remote-Q program, which allows to control the ILS22 from a remote PC or ILS15. This program is optionally available.



Contact [enquiry@intelligentlecterns.com](mailto:enquiry@intelligentlecterns.com)