

SoTouch installation guide.

This documents will guide you through the process of installing (or re-installing) the SO Touch driver and control panel software. This guide assumes some knowledge of Microsoft Windows XP.

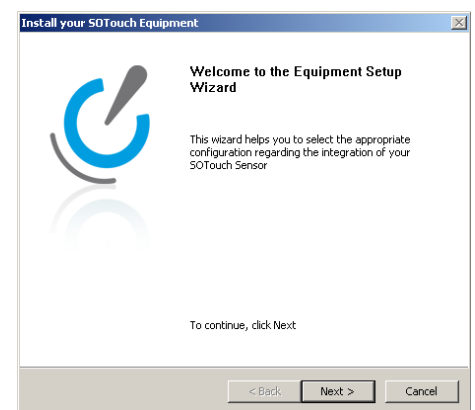
The software provided with this document is still in a developmental state, so the package may behave differently from how you would expect it to behave. The most common issues are described in this guide. If you encounter any other issues not addressed in the guide, please contact the technical support of Intelligent Lectern Systems.

Optional very first step:

Remove the SO Touch software through the 'add/remove software' which can be found in the Control Panel. After removal of the software is complete, please reboot your machine.

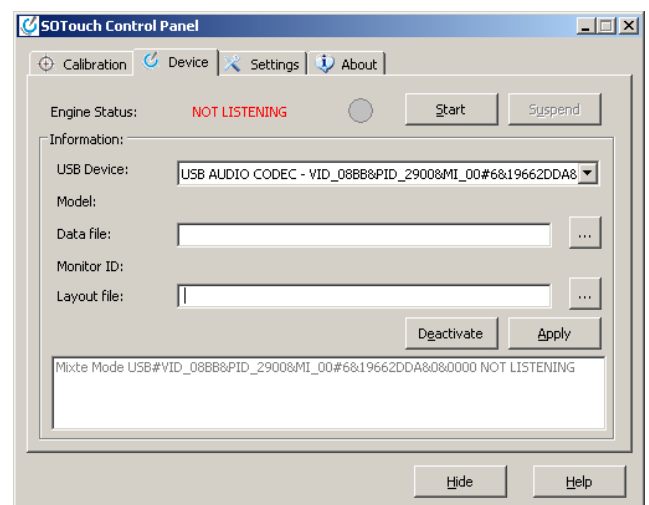
First steps:

1. Copy the complete SOtouch 2.0.2.15 folder to the C: drive. The SOtouch folder can be found on the provided CD or in the archive file.
2. Execute setup.exe in the SOtouch 2.0.2.15/Setup folder and follow the instructions.
3. After the installation is completed the Equipment Installation will be launched. Running the installation program is not required to use the SO Touch driver. The following steps will guide you through the manual process of the Equipment Installation. Manual setup will in the end be faster and easier to understand.
4. Press 'Cancel' to exit the Equipment Installation.
5. The software will now launch the Control Panel.



Equipment installation:

1. Go to the Device tab in the Control Panel.
2. For USB Device the drop down box will show two different USB devices. The 'Data file' and 'Layout file' boxes will be empty. Select: **"USB AUDIO CODEC – VID_08BB&PID_2900&MI_00# 6&3279FEC8&0&0000"**. Take notice of the **3279** part, the other parts are more or less the same.
3. Select a 'Data file'.



Which data file you have to choose depends on the serial number of your system. In the 'Glass and Sensors' folder you will find three different 'glass types', each glass type has its own database and calibration values. The serial number can be found on the back of the physical machine. The last three numbers of the serial number are an indication for the glass type. See appendix A and the two pictures below for your glass type.

Example: Serial number **0827_002** is **002**, from appendix A: glass type 2



4. Select a 'Layout file'.

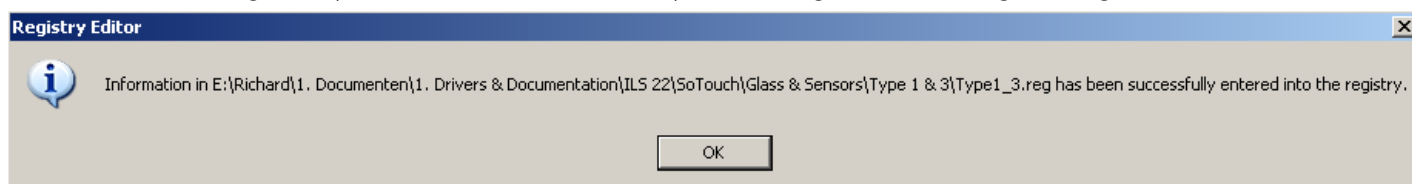
The proper layout file for the current configuration is called 'FinalTemplatellS22.xml' and can be found in the 'Glass & Sensors' folder.

5. Before activating or starting the system the keyboard and side function buttons that are engraved in the glass need to be calibrated. Due to errors in the SOTouch Control Panel this is not possible through the standard software.

Do not try this; it will corrupt the calibration data of the keyboard and side panels.

In the folder where you selected your data file you will notice a '*.reg' file. This file contains the calibration values for the standard USB device. If you have selected another USB device in the control panel please select the one previously mentioned. If this step is not possible please contact Intelligent Lectern Systems for further assistance.

Double click the '*.reg*' file you found in the folder and you should get the following message:



The side panels and the keyboard should now be properly calibrated.

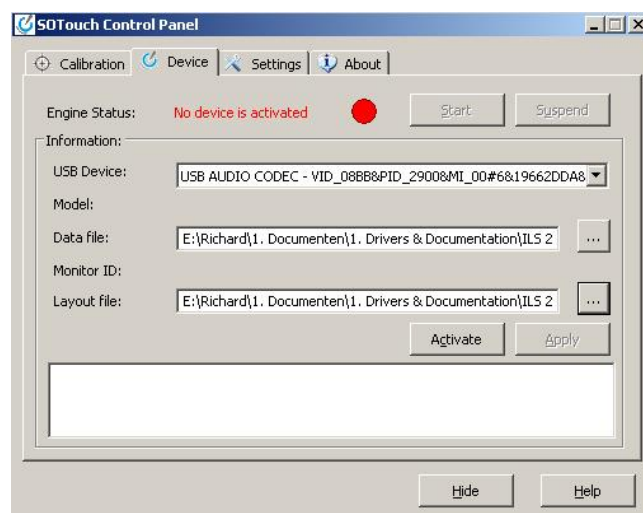
6. Go back to the Control Panel of SOTouch.

The 'Device' tab should look similar to this picture ->

You can now press the 'Activate' button.

After this action the calibration of the main screen will automatically show up. Follow the instructions on the screen complete the calibration of the system.

The glass plate is now sensitive to touch and will respond to any sound made.



Known issues and their solutions:

1. The equipment installation program provided with the So Touch software will freeze after pressing the 'Finish' button.

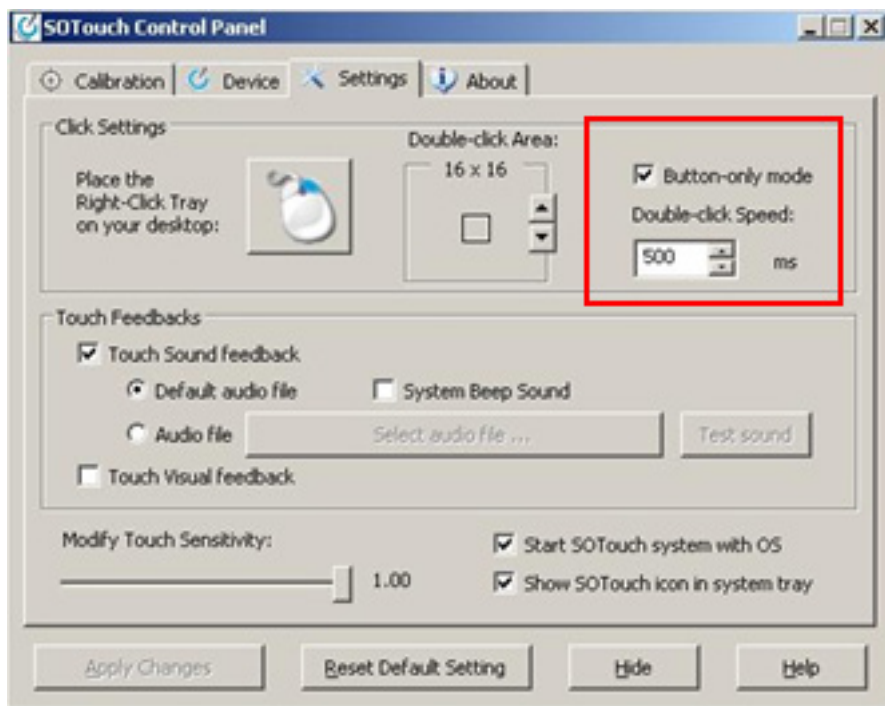
At the moment this problem cannot be fixed. This guide provides a workaround to avoid the problem. Please follow the instructions on page 4 in Appendix B.

2. After calibrating and activating the system, the side panels and the keyboard are not responding properly.

The cause is that a different USB device is configured in the SO Touch software. In this case the calibration keys can be manually altered in the registry of Windows XP, appendix B describes how to manually edit the registry values.

3. Pressing any button on the windows system feels slow.

This is a common occurrence in the system and it can easily be fixed. On the 'Settings' tab you can select the 'Button-only mode'. Choosing and applying this setting will make the response of the system instant again. In button mode it is not possible to perform drag and drop actions. When drag and drop is needed in the system it is also possible to alter the Double-click speed on the 'Settings' tab. At around 150 ms the system responds well to click and drag and drop input from the user.



4. After a calibration the side panels or keyboard do not work anymore

Calibrating the side panels or the keyboard through the SO Touch software causes the calibration values to corrupt. The only way to correct this problem is to manually alter the calibration values in the Windows registry. Appendix B provides a manual for this action.

Appendix A

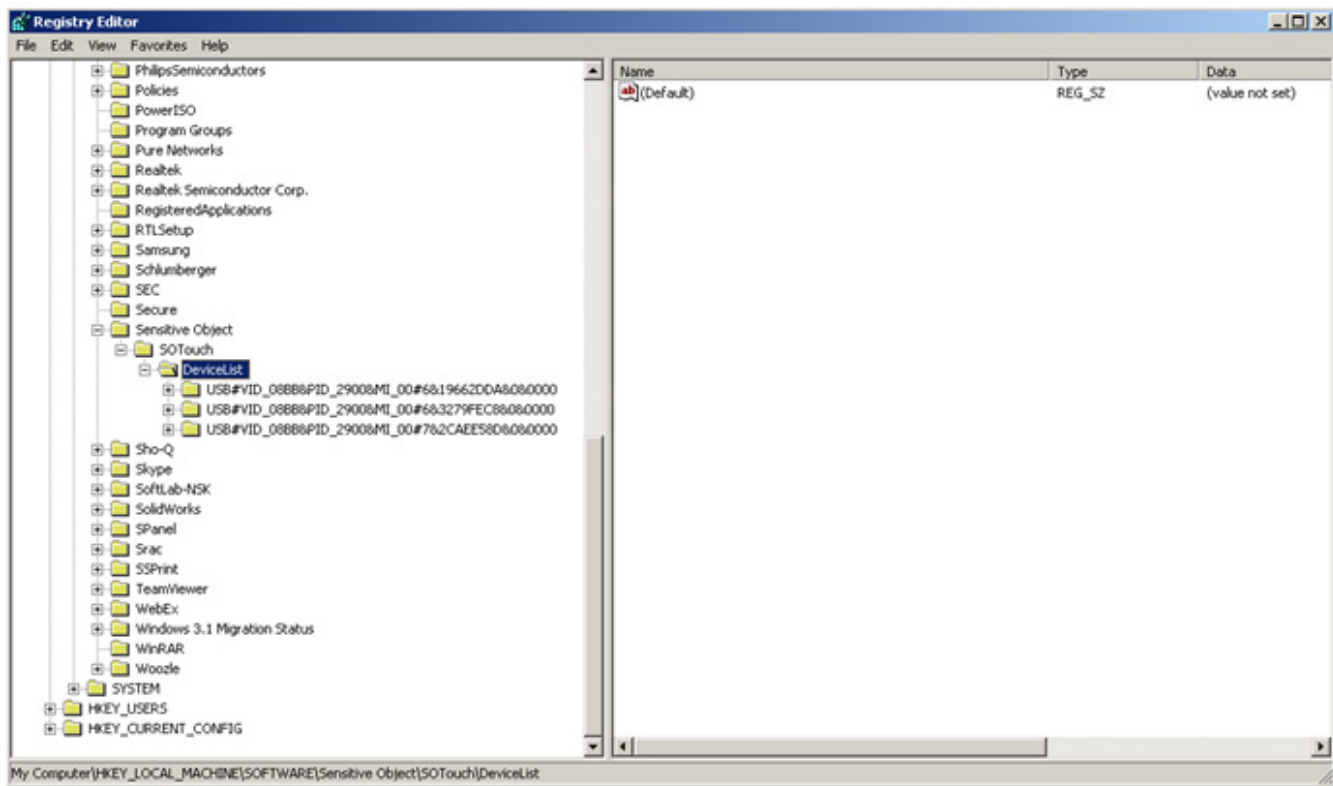
Serial number	Glass type
001	2
002	2
003	1
004	2
005	3
006	1
007	1
008	2
009	1
010	1
011	1
012	1
013	1
014	1
015	2
016	1
017	1
018	1
019	1
020	1
021	3
022	1
023	3
024	1
025	1
026	1
027	3
028	1
029	1
030	2
031	1
032	1
033	2
034	3
035	1
036	3
037	1
038	3
039	1
040	3
041	3
042	3
044	1
045	1

Appendix B

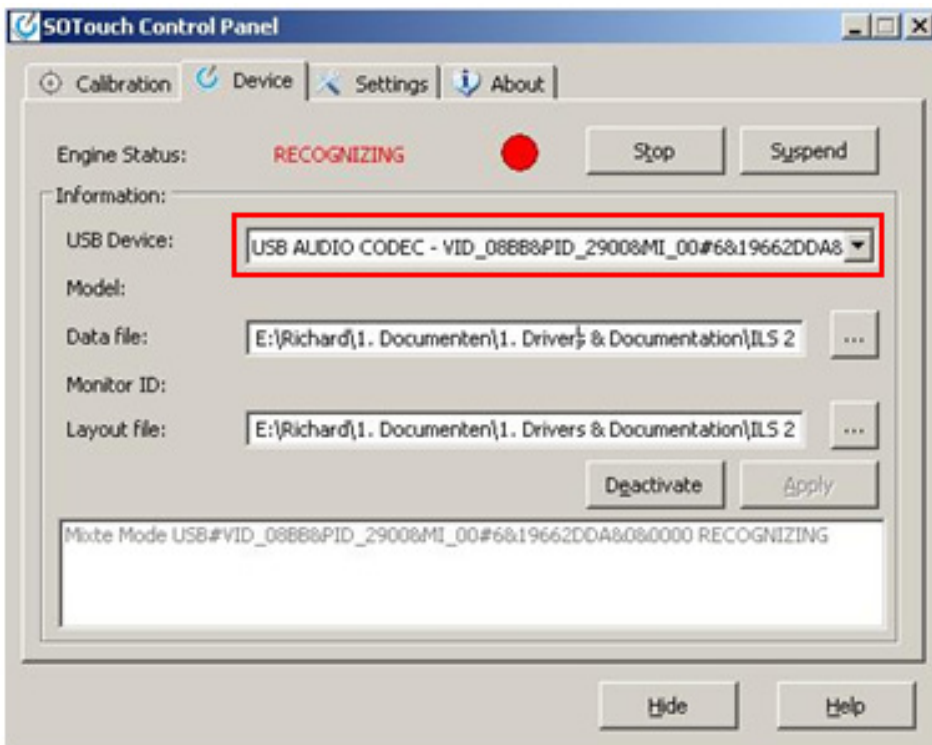
Edit calibration values manually (advanced users only)

Start the registry editor.

Browse to: "HKEY_LOCAL_MACHINE\SOFTWARE\Sensitive Object\SOtouch\DeviceList"



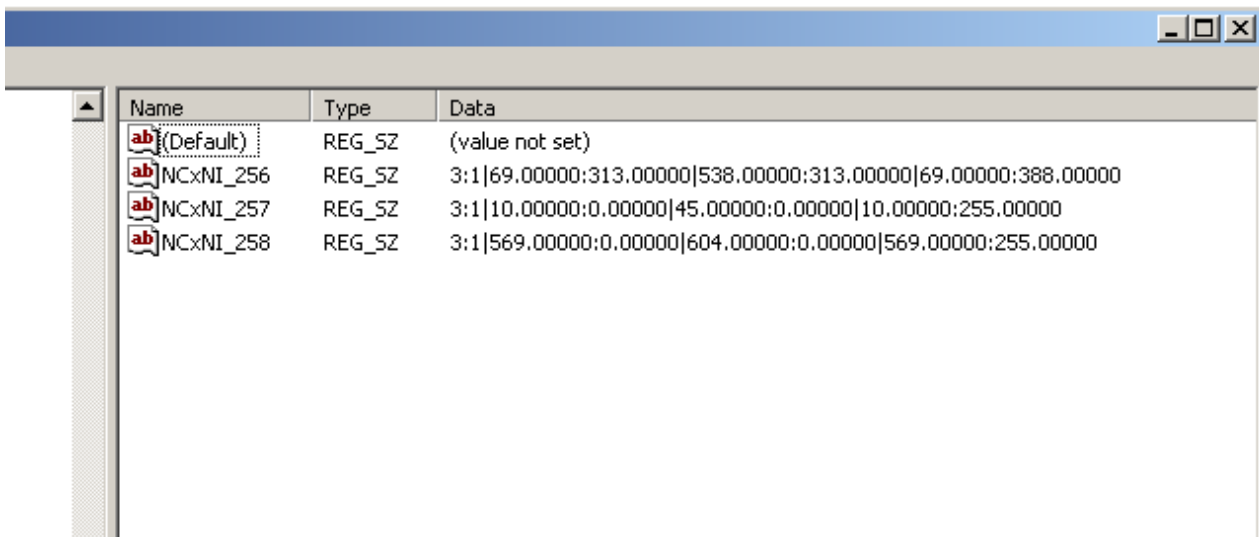
In the list under DeviceList there should be one or two devices listed. One will be same as in the So Touch Control Panel under the tab 'Device'. Press the '+' sign in front of the correct name and browse to 'CalibrationKey'.



Here you will find four different values.

- (Default) is a standard value and is not used for the SO Touch program.
- NCxNI_256 are calibration values for the keyboard
- NCxNI_257 are calibration values for the left side panel
- NCxNI_258 are calibration values for the right side panel

The values are expressed in pixels.

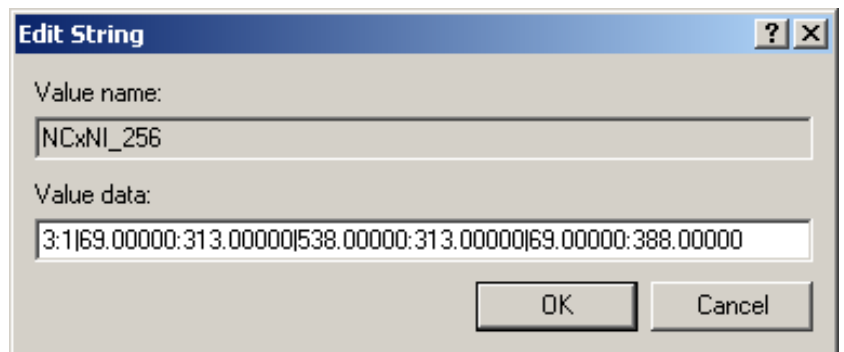


Name	Type	Data
(Default)	REG_SZ	(value not set)
NCxNI_256	REG_SZ	3:1 69.00000:313.00000 538.00000:313.00000 69.00000:388.00000
NCxNI_257	REG_SZ	3:1 10.00000:0.00000 45.00000:0.00000 10.00000:255.00000
NCxNI_258	REG_SZ	3:1 569.00000:0.00000 604.00000:0.00000 569.00000:255.00000

To edit one of the values right click on the name and select 'Modify' in the menu. A separate window will appear where you can edit the registry value. The format stated in the picture must be closely followed otherwise you might corrupt the data in the registry.

When the difference between the keys of the keyboard or side panels and from the engravings on the glass is very small, change the values only by one or two pixels.

Example: **69.00000** changes to **68.00000** or **67.00000**. Keep in mind that the **five zeroes** at the end are important.



After you are done editing the values in the registry you need to reactivate the So Touch engine. The calibration values are only read from the registry on start up of the USB devices.

It takes ten to fifteen seconds for the So Touch engine to be fully active again. The Control Panel will notify you when it is ready.

After this you can test your newly changed calibration values by tapping on the glass plate.

